



# Building for a Better Tomorrow

Please join us.

Together we will create a bold, beautiful and essential new Centre.

**HARRY J. ENNS**  
WETLAND DISCOVERY CENTRE











## HARRY J. ENNS

### WETLAND DISCOVERY CENTRE

WITH YOUR HELP, TOGETHER WE WILL TRANSFORM THE OAK HAMMOCK MARSH INTERPRETIVE CENTRE INTO A **BOLD, BEAUTIFUL AND ESSENTIAL DESTINATION**, SHOWCASING THE IMMENSE VALUE OF CANADA'S WETLANDS.

The physical renovations to the Centre will enhance and secure this site as an international destination to immerse yourself in nature and the technological changes will bring the visitor experience into your living room. These improvements will allow all Canadians to see, hear, feel and interact with the sounds, sights and beauty that wetlands provide.

Making connections with nature, and with each other, is more important than ever. With your help, the Harry J. Enns Wetland Discovery Centre can help all of us do that. **This is the moment. Building today for a better tomorrow.**



At Ducks Unlimited Canada, our vision is healthy wetlands and clean water for all waterfowl, wildlife and people. The Centre is our opportunity to share 85 years of wetland conservation and scientific research with the world. And most importantly inform Canadians on the need to conserve and restore these vital ecosystems that keep our communities healthy and safe.

A new vision. A new centre.  
**Where you can immerse yourself in nature.**











# Building on What Works

## Location | Where east meets west. Where prairie meets boreal.

Oak Hammock Marsh is a designated Ramsar Wetland of International Importance. BirdLife International has identified it as an Important Bird and Biodiversity Area. Aspen-oak bluffs, artesian springs, some of Manitoba's last remaining patches of tall-grass prairie and 30 kilometres of trails to explore. Every season brings new life and new discoveries; this is the perfect place to explore the wonder of wetlands. ***If location is everything - we've got that covered.***

## Reputation | Award-winning programs attracting visitors near and far.

Approximately 100,000 people visit the award-winning Centre every year learning about wetlands, environmental challenges and finding solutions. On any given day, you may hear the squeals of excited schoolchildren mingling with conversations among scientists and keenly interested visitors. ***We know how to build on the amazing success of the Centre.***

## Expertise | Building programs since 1993.

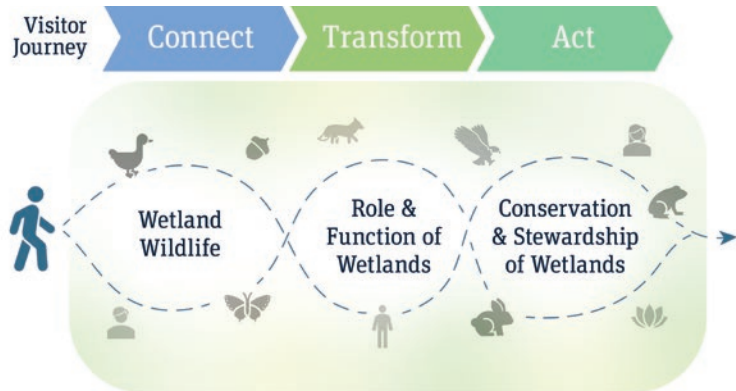
Alongside Ducks Unlimited Canada and the Province of Manitoba, the Centre has built one of North America's most recognized educational programs for school groups and tourists through a variety of guided activities, workshops, camps, interactive exhibits and displays. ***These programs now need updated infrastructure to support the advancements in today's technologies and how we now learn.***







Pictured: Artistic rendering of proposed renewed exhibit spaces

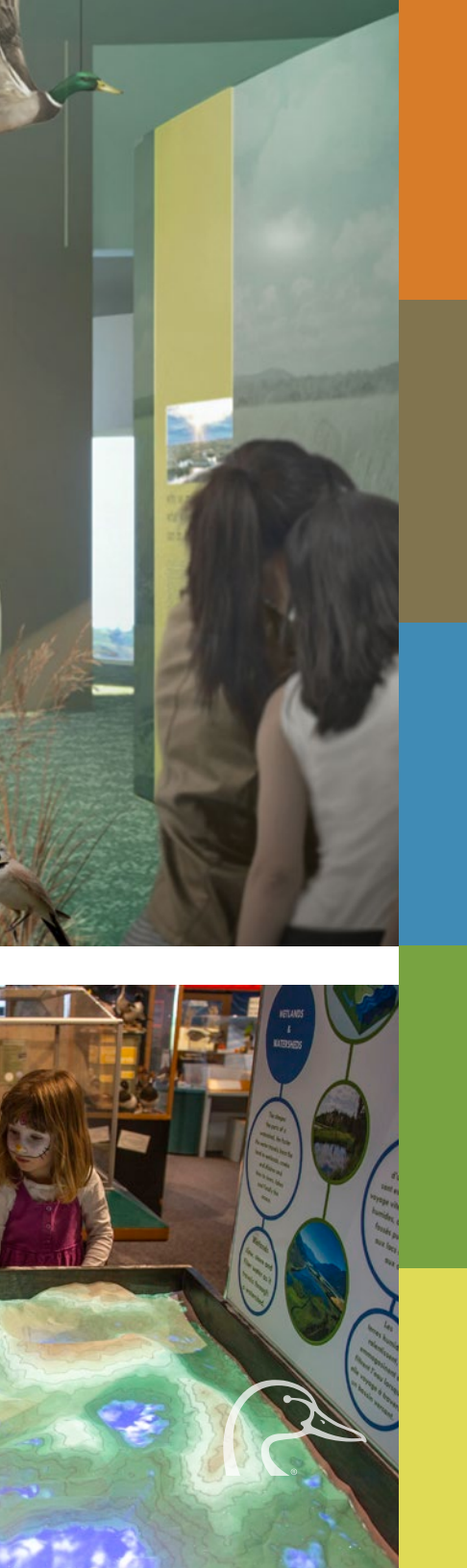




# An Experience with Purpose

Planting the seed to 'act', is an important part of our renovations to the Centre. The Centre will focus on a visitor journey, both virtual and in person, that **connects**, **transforms** and **inspires action**. Visitors will gain a stronger understanding of wetlands, why they are relevant and what they can do to protect these ecosystems.

The Centre will leverage technology to provide wetland conservation education and engagement to people around the world. We will showcase cutting-edge research that informs our response to environmental crises and we will inspire future leaders to tackle conservation challenges and ensure the future of Canada's wetland habitats.





Creating life-changing experiences, relationships and connections to wetlands.



*Pictured: Artistic rendering of proposed renewed exhibit spaces*



# The Importance of Wetlands

Conservation and the importance of natural areas have come into sharp focus for Canadians in recent years.

*“Since 2005, the number of studies of the impact of nature experience on human development has grown from a handful to nearly one thousand. This expanding body of scientific evidence suggests that nature-deficit disorder contributes to a diminished use of the senses, attention difficulties, conditions of obesity, and higher rates of emotional and physical illnesses.”*

*- <http://richardlouv.com/blog/what-is-nature-deficit-disorder/>*

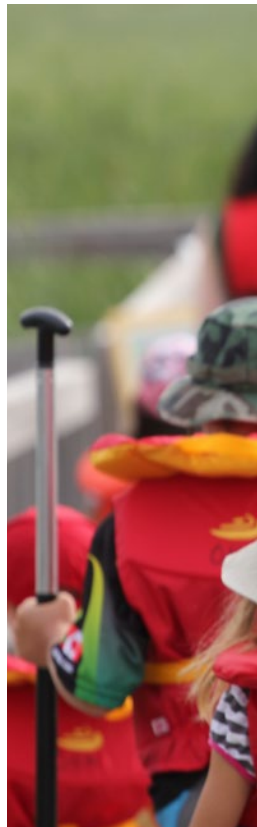
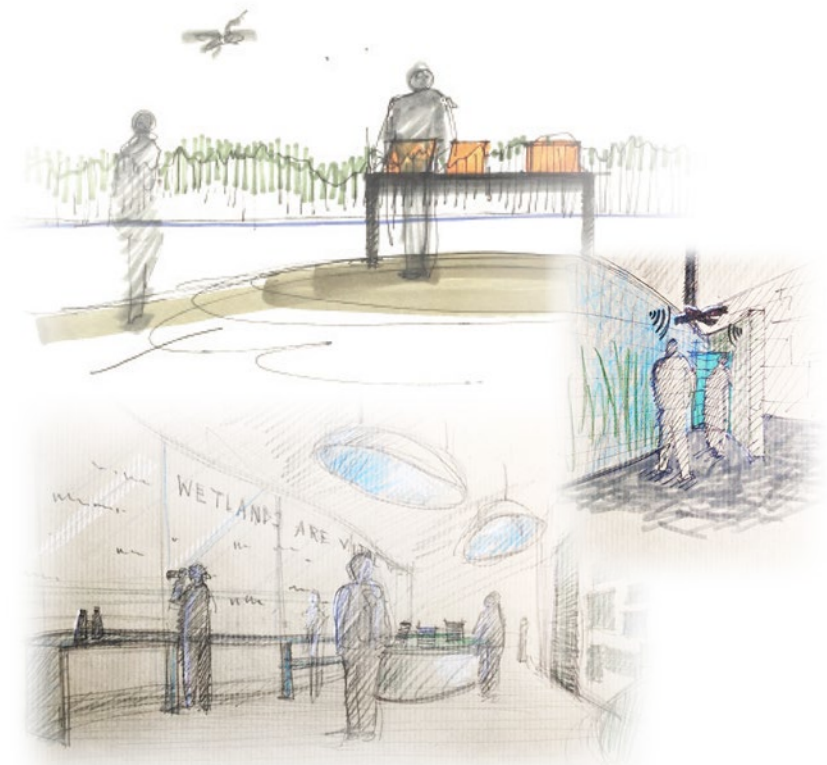
People are making new connections between wetlands and their well-being, their lifestyles and their hopes for the future. In an era where more and more of us are disconnected from nature, our investment in environmental education and outdoor learning could not be more timely.

Wetland conservation creates a swell of significant benefits that flow to all Canadians. They include clean air and clean water. Lush green landscapes and lucrative green jobs. Natural infrastructure projects safeguard our communities and sustainable practices empower industries, developers and agricultural producers.

Conserving wetland habitats supports our health, environment and economy in real and powerful ways.











# How You Can Help

Our campaign goal is \$6.4 million. This will firmly establish the Harry J. Enns Wetland Discovery Centre as the heart of wetland conservation and education in North America. There are a number of funding opportunities. Many of these improvements and new additions to the Centre will offer onsite and virtual donor recognition for years to come. We would be happy to work with you to tailor recognition to meet your level of giving. **Please join us. Help build today for a better tomorrow.**

## **New interactive and immersive exhibits will creatively engage visitors in wetlands and wetland conservation.**

### **Wall of Species Exhibit**

Mass display of species (graphic and specimens or models) with *Augmented Reality* viewers.

### **Wildlife of Wetlands Exhibit**

Interpretive graphics, displays of species models, specimens, live animal and plants displays, wildlife sighting tools and other hands-on activities.

### **Role and Function of Wetlands Exhibit**

Including a large digital map, ***Flood the Town*** exhibit, live cattail display, interpretive graphics, visitor feedback station and massive display of waterfowl decoys.

### **Conservation and Stewardship of Wetlands Exhibit**

Interpretive panels, changeable displays, low-tech multiplayer role-playing game and visitor feedback area.

**\$3,900,000**

(includes both internal and exterior exhibits and signage)

## **New technology to reach Canadians and audiences around the world.**

A state-of-the-art production and broadcast studio and upgrades to the Centre will enable us to deliver virtual and distance learning to diverse audiences.

**\$600,000**

## **Renovations to the Centre to ensure a welcoming and accessible environment for all Canadians.**

To reflect the changes in our society and ensure an inclusive environment for all we will be updating a number of areas within and outside of the Centre from washroom facilities to retail services.

**\$1,900,000**





# Building for a Better Tomorrow

## HARRY J. ENNS WETLAND DISCOVERY CENTRE

To explore giving opportunities please contact:

**Nathalie Bays**

Manager, Harry J. Enns Wetland Discovery Centre  
Ducks Unlimited Canada  
204-467-3308  
n\_bays@ducks.ca

**William (Bill) Jones**

National Development Manager  
Ducks Unlimited Canada  
416-648-8624  
w\_jones@ducks.ca

